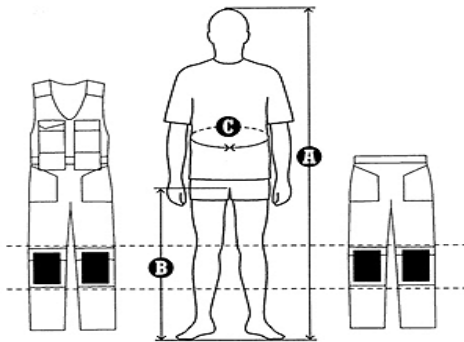


Dunedin Builders Merchants Ltd

Units 14 – 16
 Dunedin Street
 EDINBURGH
 EH7 4JG
 Tel.:(0131) 557 2345
 Fax.:(0131) 5572341
www.dunedin-builders-merchants.co.uk

Snickers Size Information

If your size does not appear in the charts below, please call the Helpline on 01484 854788.

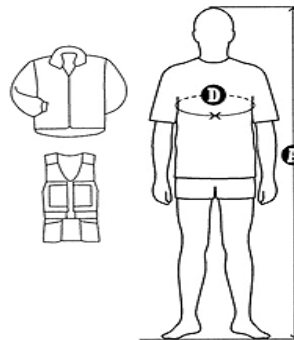


	X-Short	Short	Regular	Long	X-Long		
A	152cm/5'	164cm/5'4"	176cm/5'8"	188cm/6'2"	200cm/6'6"		
B	70cm/28"	76cm/30"	82cm/32"	88cm/35"	94cm/37"		
	184	84	44	144	244	C	76 cm/30"
	188	88	46	146	246	C	80 cm/31"
	192	92	48	148	248	C	84 cm/33"
	196	96	50	150	250	C	88 cm/35"
	200	100	52	152	252	C	92 cm/36"
	204	104	54	154	254	C	96 cm/38"
	208	108	56	156	256	C	100 cm/39"
	212	112	58	158	258	C	104 cm/41"
	216	116	60	160	260	C	112 cm/44"
	220	120	62	162	262	C	120 cm/47"
							X
							S
							M
							L
							XL
							XXL

The body and its dimensions

Buying clothes in the right size is just as important as choosing the right size when you buy leisurewear or sports clothes. In fact, how well your clothes fit is possibly even more important at work. In particular when you wear trousers with kneepads.

If you follow the simple instructions right, we guarantee that your Snickers Workwear products will be the right size and that the kneepads will end up in the right place. Which will be a lot less painful.



	Short	Regular	Long	
A	-170 cm/ 5'6"	170-182 cm 5'6"-6'	182- cm/ 6'	
	XS	XS	XS	D
	S	S	S	D
	M	M	M	D
	L	L	L	D
	XL	XL	XL	D
	XXL	XXL	XXL	D
				88 cm/35"
				96 cm/38"
				104 cm/41"
				112 cm/44"
				124 cm/49"
				132 cm/52"

Standard sizes. All sizes outside the box are subject to a minimum order quantity of 2 items per product/size. All ladies garments (p.129) have a minimum order quantity of 2 items per product/size.

For Free information and advice call our Helpline